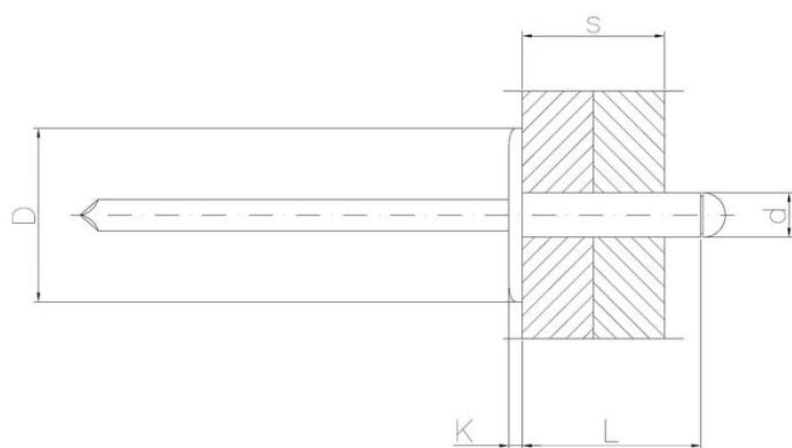




????????? (?????????):



B
ЦИНКОВОЕ
ПОКРЫТИЕ
В БЕЛОМ ЦВЕТЕ

????????

Material index	d [mm]	L [mm]	D [mm]	s [mm]	k [mm]
2403040080AS12T	4.0	8	12.0	1.5-5.0	1.4
2403040100AS12T	4.0	10	12.0	5.0-6.5	1.4
2403040120AS12T	4.0	12	12.0	6.5-8.5	1.4
2403040140AS12T	4.0	14	12.0	8.5-10.5	1.4
2403040160AS12T	4.0	16	12.0	10.5-12.5	1.4
2403040180AS12T	4.0	18	12.0	12.5-14.5	1.4
2403040200AS12T	4.0	20	12.0	14.5-16.5	1.4
2403048100AS16T	4.8	10	16.0	3.0-5.5	1.8
2403048120AS14T	4.8	12	14.0	6.0-7.5	1.8
2403048120AS16T	4.8	12	16.0	6.0-7.5	1.8
2403048140AS14T	4.8	14	14.0	8.0-9.5	1.8
2403048140AS16T	4.8	14	16.0	8.0-9.5	1.8
2403048160AS14T	4.8	16	14.0	10.0-11.5	1.8
2403048160AS16T	4.8	16	16.0	10.0-11.5	1.8
2403048180AS14T	4.8	18	14.0	12.0-13.5	1.8
2403048180AS16T	4.8	18	16.0	12.0-13.5	1.8

Material index	d [mm]	L [mm]	D [mm]	s [mm]	k [mm]
2403048210AS14T	4.8	21	14.0	14.0-16.5	1.8
2403048210AS16T	4.8	21	16.0	14.0-16.5	1.8
2403048240AS14T	4.8	24	14.0	17.0-19.5	1.8
2403048240AS16T	4.8	24	16.0	17.0-19.5	1.8
2403048300AS14T	4.8	30	14.0	23.0-24.5	1.8
2403048300AS16T	4.8	30	16.0	23.0-24.5	1.8
2403050120AS14T	5.0	12	14.0	6.0-8.0	1.8
2403050160AS14T	5.0	16	14.0	10.0-12.0	1.8
2403050180AS14T	5.0	18	14.0	12.0-14.0	1.8
2403050200AS14T	5.0	20	14.0	14.0-16.0	1.8
2403050250AS14T	5.0	25	14.0	16.0-21.0	1.8
2403050300AS14T	5.0	30	14.0	21.0-25.0	1.8